

MLS Area LN

Listings	This Month			Year-to-Date		
	Dec 2021	Dec 2020	Change	2021	2020	Change
Single Family Sales	67	73	-8.2%	774	782	-1.0%
Condo/TH Sales	14	6	+133.3%	112	124	-9.7%
Total Sales	81	79	+2.5%	886	906	-2.2%
New Homes Only	16	22	-27.3%	137	233	-41.2%
Resale Only	65	57	+14.0%	749	673	+11.3%
Sales Volume	\$51,015,062	\$41,425,907	+23.1%	\$544,414,113	\$414,089,863	+31.5%
New Listings	43	42	+2.4%	1,041	948	+9.8%
Pending	--	--	--	--	--	--
Withdrawn	8	2	+300.0%	32	57	-43.9%
Expired	8	2	+300.0%	32	57	-43.9%
Months of Inventory	1.1	0.8	+171.0%	N/A	N/A	--

Average	This Month			Year-to-Date		
	Dec 2021	Dec 2020	Change	2021	2020	Change
List Price	\$624,869	\$531,363	+17.6%	\$600,379	\$466,170	+28.8%
List Price/SqFt	\$286	\$220	+30.1%	\$260	\$193	+34.9%
Sold Price	\$629,816	\$524,379	+20.1%	\$614,463	\$457,053	+34.4%
Sold Price/SqFt	\$286	\$217	+32.0%	\$266	\$189	+40.3%
Sold Price / Orig LP	100.2%	99.3%	+1.0%	102.8%	98.7%	+4.2%
Days on Market	35	50	-31.1%	26	76	-65.2%

Median	This Month			Year-to-Date		
	Dec 2021	Dec 2020	Change	2021	2020	Change
List Price	\$499,000	\$425,000	+17.4%	\$469,536	\$350,000	+34.2%
List Price/SqFt	\$273	\$197	+38.3%	\$236	\$174	+35.5%
Sold Price	\$495,000	\$425,000	+16.5%	\$475,000	\$350,000	+35.7%
Sold Price/SqFt	\$272	\$198	+37.3%	\$244	\$173	+41.4%
Sold Price / Orig LP	100.0%	100.0%	+0.0%	100.0%	99.2%	+0.8%
Days on Market	10	21	-52.4%	8	39	-79.5%

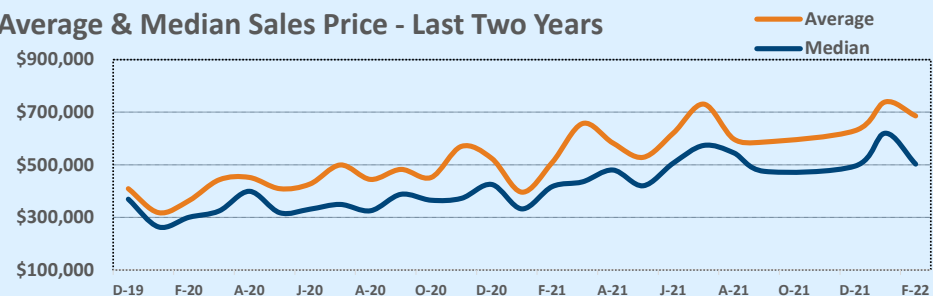
Residential Statistics

Independence Title

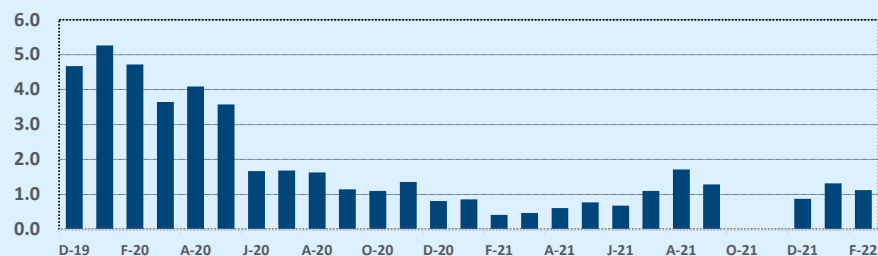
December 2021

Price Range	This Month			Year-to-Date		
	New	Sales	DOM	New	Sales	DOM
\$149,999 or under	--	2	38	13	13	30
\$150,000- \$199,999	1	1	2	36	29	20
\$200,000- \$249,999	2	2	3	24	27	15
\$250,000- \$299,999	3	4	35	59	64	32
\$300,000- \$349,999	1	9	19	87	86	21
\$350,000- \$399,999	2	9	21	129	106	22
\$400,000- \$449,999	7	6	18	74	78	19
\$450,000- \$499,999	3	9	34	84	70	16
\$500,000- \$549,999	3	5	17	71	60	22
\$550,000- \$599,999	3	7	31	69	58	16
\$600,000- \$699,999	9	3	7	92	79	31
\$700,000- \$799,999	3	6	26	78	60	25
\$800,000- \$899,999	1	3	273	44	42	46
\$900,000- \$999,999	1	3	30	42	14	19
\$1M - \$1.99M	2	11	36	114	87	44
\$2M - \$2.99M	--	1	10	11	7	29
\$3M+	2	--	--	14	6	113
Totals	43	81	35	1,041	886	26

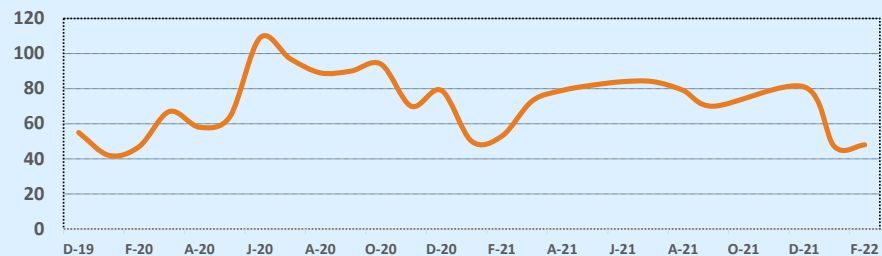
Average & Median Sales Price - Last Two Years



Months of Inventory - Last Two Years



Number of Sales - Last Two Years



Based on information from the Austin Board of REALTORS® (alternatively, from ACTRIS). Neither the Board nor ACTRIS guarantees or is in any way responsible for its accuracy. The Austin Board of REALTORS®, ACTRIS and their affiliates provide the MLS and all content therein "AS IS" and without any warranty, express or implied. Data maintained by the Board or ACTRIS may not reflect all real estate activity in the market.